



# Easily Create Data-Centric Dashboards in SharePoint

eSENSE Visualizers V3 allow organizations to quickly and easily create great looking SharePoint dashboards to display information from multiple systems and sources, using advanced charts, maps and grids directly onto SharePoint pages. This allows SharePoint users to rapidly build data-centric dashboards aligning SharePoint content with structured data from multiple sources such as ERP, HR, CRM and Financial systems.

## 5 Steps in 5 Minutes...

eSENSE Visualizers provide an intuitive 5-step process to access, select and configure information from multiple data sources within SharePoint sites. It starts with connecting to a data source - such as a database, web service, application or xml file – using a smart client interface. Once connected, users select and filter the data they want to display and update within their SharePoint sites. The selected data can then be correctly formatted using configurable display options according to user requirements or company standards. Once formatted, user permissions can be assigned against SharePoint roles using multiple views of the selected data. The final step is a simple “drag and drop” process of the data onto SharePoint pages using multiple graphical, grid or mapping display options.

## Entity Management

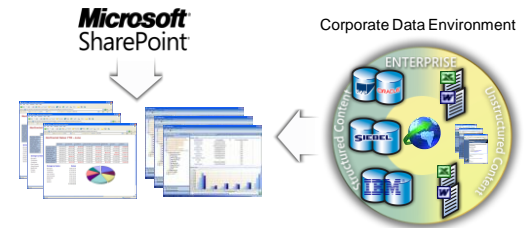
When line of business data is added to SharePoint sites, a number of items related to accessing the data needs to be managed. This includes managing all the entities, data sources, relationships, views and role security. eSENSE Visualizers go beyond simply configuring and displaying the data; they allow an organization to control all of the elements needed to design and deploy business dashboards. This provides enterprises a comprehensive and secure framework to access, display and update any business data, in any number of formats (charts, grids, hierarchical grids, maps etc.) to any type and number of SharePoint sites.

## Overview

Easily work with business data in SharePoint with a simple 5-Step process using eSENSE Visualizers. Build data-centric business dashboards with little or no coding requirements:

1. Connect to the data sources or systems using a smart client interface;
2. Select and filter the data to be displayed;
3. Format columns and output display options;
4. Set user permissions against SharePoint roles;
5. Drag and drop data onto SharePoint pages using multiple graphical, grid or map display options.

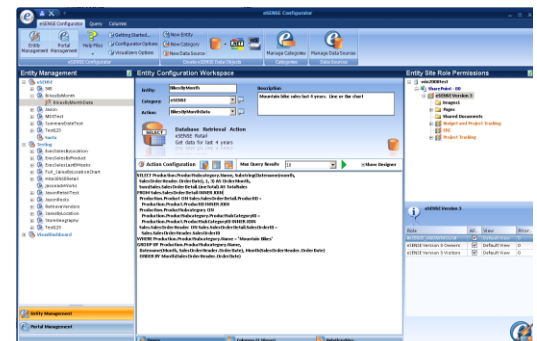
eSENSE Visualizers work with all 2003, 2007 & 2010 versions of SharePoint.



*Securely display and update line of business data from multiple sources within your standard SharePoint environments.*



*Easily create great looking dashboards...*



*With little or no programming requirements*

